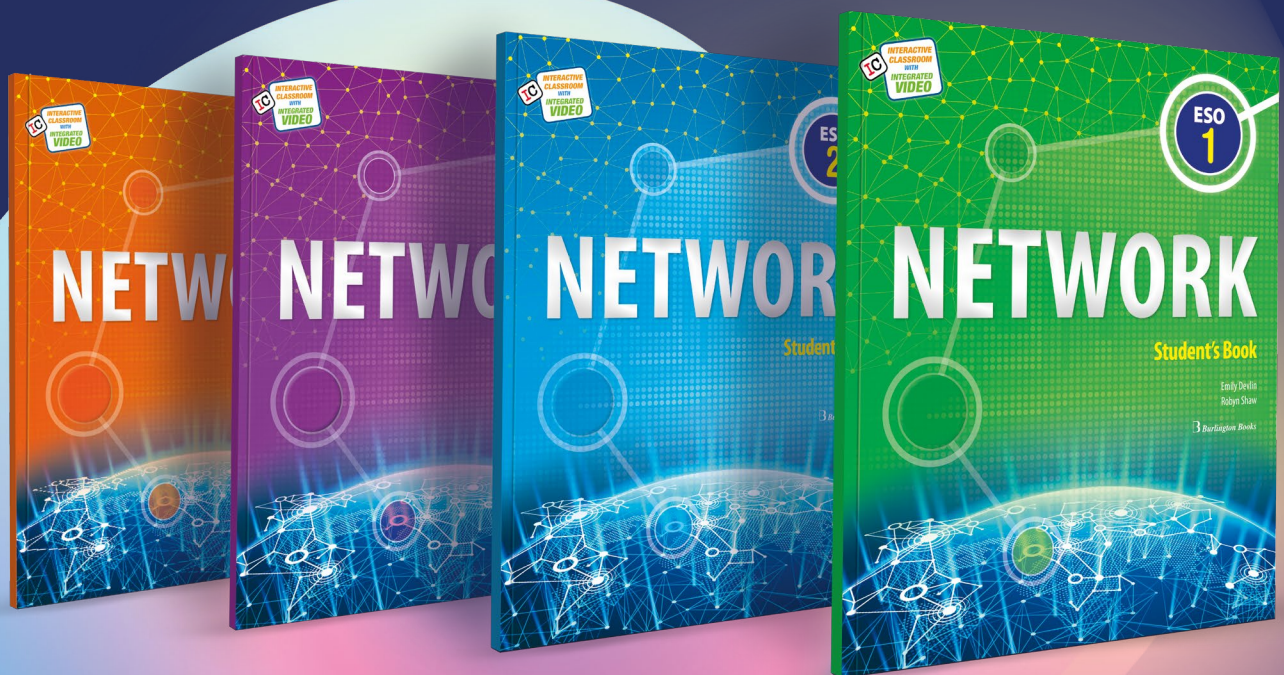


B Burlington Books

READY
for the
LOMLOE



NETWORK'S
innovative structure
gives students a
sense of progress



Why choose **NETWORK**?

Network is a carefully graded modular-based course that provides students with the English skills they need for the 21st century and develops all eight key competences in a natural way.



Network's innovative structure gives students a sense of progress.

Six thematic modules with clearly labelled skills practice offer meaningful and varied productive tasks.



The wide variety in content and types of language incorporates the key competences in a natural way.

Up-to-date topics, videos and culture quizzes provide intercultural enrichment and STEM materials, and encourage social awareness, personal initiative and digital learning skills.



Productive tasks develop communication practice and mediation skills.

2 Scaffolded tasks, problem-solving activities, collaborative projects and *Time to Network* tasks give students the opportunity to express themselves in real-life situations.



A fully integrated approach develops plurilingual and reflective competences.

Network combines integrated skills work with solid language practice and encourages students to reflect on plurilingual aspects of language learning and develop critical thinking skills.



Enhanced evaluation tools offer additional review and assessment options.

Improved new evaluation tools now include: interactive *Section Tests*, *Use of English* and *Competences Assessment*, as well as *Progress Check* materials for students.



New features and functions on the Burlington Digital Platform offer the best digital solutions for effective learning.

Fully interactive Student's Books and Workbooks, additional digital classroom resources, new interactive section tests and online student support materials with Flipped Classroom activities develop digital skills.



A full range of **Components**





NETWORK

Network puts the **LOMLOE** requirements into practice.



Learning through competences

Network's active and participative methodology develops all specific linguistic competences.

- Task-based module structure enhances comprehension and production skills in every section while the language learning process itself facilitates the other key competences.
- *Time to Network* focuses on interactive activities, develops skills in communication, mediation and collaboration, and enables meaningful learning.
- Reviews and self-assessment charts encourage reflective learning (learn to learn) as well as initiative – students learn to think about and take responsibility for their learning.
- Network covers all the basic contents for ESO – communicative, plurilingual and intercultural.
- *Life Skills* provide students with learning tools that will last them a lifetime.

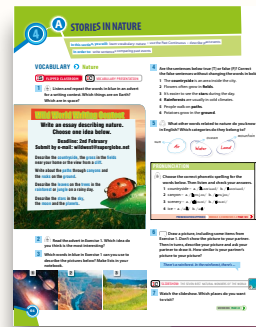


Inclusivity

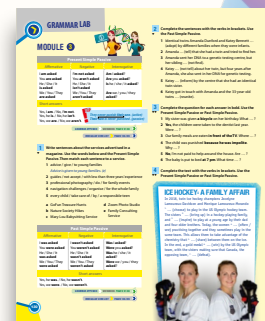
Network is a flexible course designed to accommodate a diversity of levels in the classroom and different learning styles.

- Varied and graded exercises and activities in *Grammar Lab* and *Workbook Language Builder* may be adapted to every student's pace. Basic Practice workbooks are also available.
- Teacher's resources come with editable extra materials and tests at different levels, and a new *Test Generator* enables personalised evaluation.
- Collaborative projects, pairwork, games and quizzes engage all students of all levels in active learning.
- Additional graded and consolidation practice in *Workbook* and *Flipped Classroom* for self-study.

READY
for the
LOMLOE



Varied and graded activities



Flexible resources for different levels



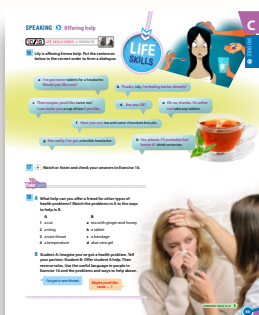
Focus on vocabulary acquisition



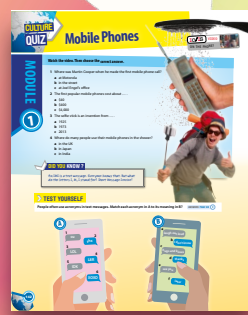
Interactive activities and projects



Reflective learning (learning to learn)



Developing communication and mediation



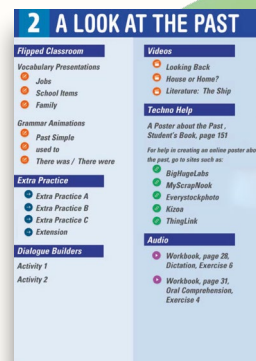
Culture Quiz



Life Skills tools



- Through the *Flipped Classroom* and *Interactive Student*, students can study at home at their own pace online.
- *Techno Help* for projects encourages students to search the web and complement their learning with authentic materials and to learn to use the Internet responsibly.



Flipped classroom



Digital research



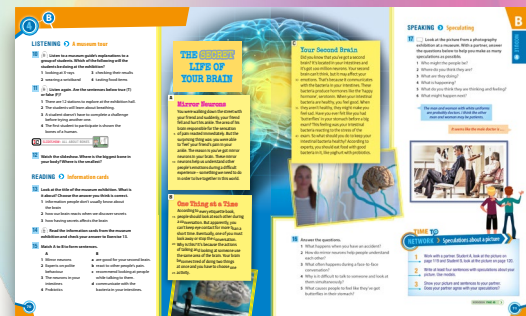
- Carefully selected topics promote awareness of, and respect for, diversity, gender equality and the need for global sustainability.
- *Time to Network* tasks and projects develop creativity and mediation skills, and encourage debate and collaboration to solve problems.
- Real-world cultural, scientific and cross-curricular videos encourage and develop students' curiosity and general knowledge.
- Our courses incorporate education in STEM, and intercultural work.



Problem solving



Social awareness



Focus on STEM

